

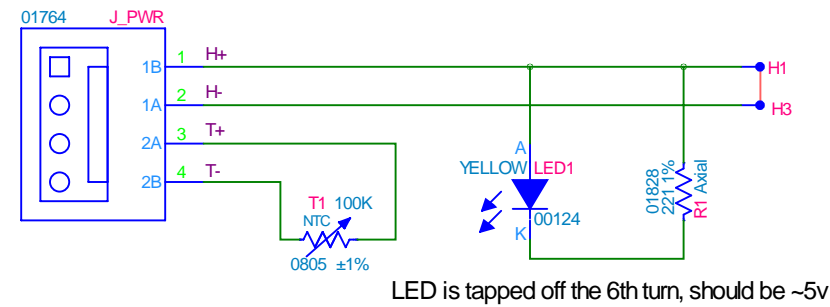
REV	ENGINEER	DATE	REMARKS
0v0	BAC	2011-08-18	Initial Prototype
-	-	-	-
-	-	-	-
-	-	-	-
-	-	-	-

H+, H - PCB Trace used as heater

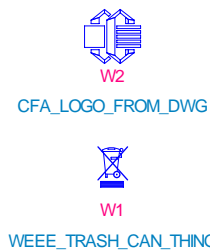
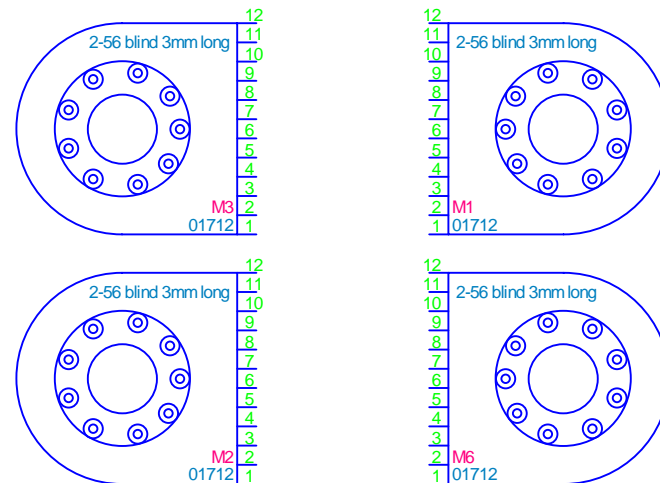
Outer Trace: 847mm x 1.4mm 0.297 ohms@25°C 0.413 ohms@125°C (113% power/area)*
 Second Trace: 834mm x 1.5mm 0.273 ohms@25°C 0.379 ohms@125°C (106% power/area)*
 Inner Traces: 23737mm x 1.6mm 7.29 ohms@25°C 10.13 ohms@125°C (100% power/area)
 Overall: 25418mm 7.86 ohms@25°C 10.93 ohms@125°C
 Current at 30v: 3.81 amps@25°C 2.74 amps@125°C
 Power at 30v: 114.5 watts@25°C 82.4 watts@125°C

ref: <http://circuitcalculator.com/wordpress/2006/01/24/trace-resistance-calculator>

* To counteract extra heat loss at edge.



Threaded solder-in inserts.



Crystalfontz America, Inc.

CFA-10051: MakerGear Prusa Heater PCB

Page 1 / 1: Heat Traces, LED, Thermistor

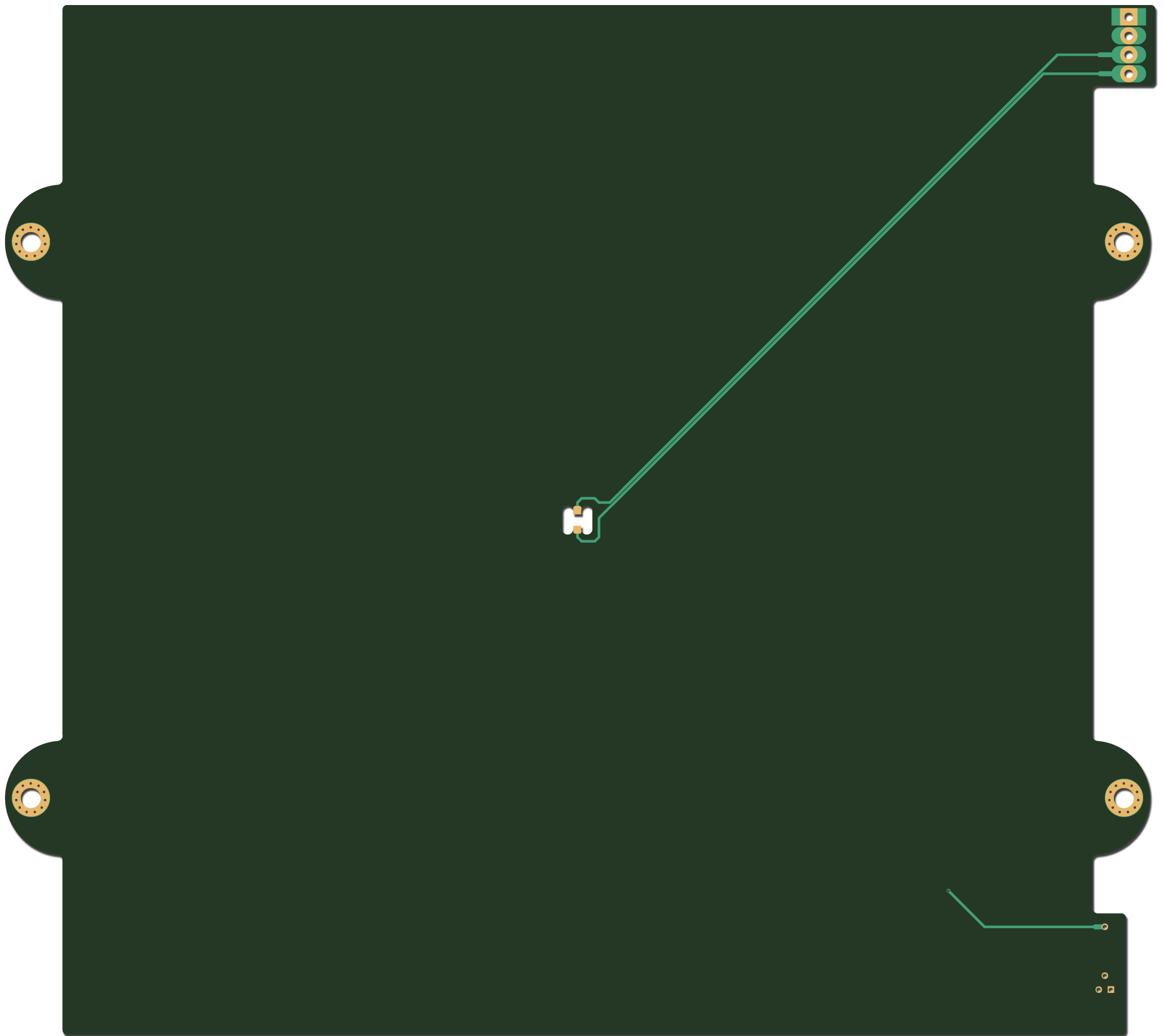
FILE NAME: CFA-10051_SCH


REVISION: 0v0



<p> Crystalfontz 12412 East Salliese Avenue Spokane Valley, WA 99216 USA Tel: (509) 892-1200 http://www.crystalfontz.com Copyright © 2012 Crystalfontz America, Inc. </p>	PROJECT CFA-10051 Heater, 30v	
	REVISION 0v0	DATE 2012 / 02 / 09
	LAYER LAYER 01: PCB MASK	FILE NAME 02-10051_0v0_SSP.pho

TOP PCB PREVIEW



 Crystalfontz 12412 East Salliese Avenue Spokane Valley, WA 99216 USA Tel: (509) 892-1200 http://www.crystalfontz.com Copyright © 2012 Crystalfontz America, Inc.	PROJECT CFA-10051 Heater, 30v
	REVISION 0v0
LAYER BAYERM4 (BOTTOM)	FILE NAME 05-10051_0v0_B08.pho

BOTTOM PCB PREVIEW